

E · L · E · C · T · R · I · C · A · L

# COPPER PRODUCTS



DUCK WOO WON CO., LTD



# COPPER BRAID & SLEEVES



## COPPER BRAIDS

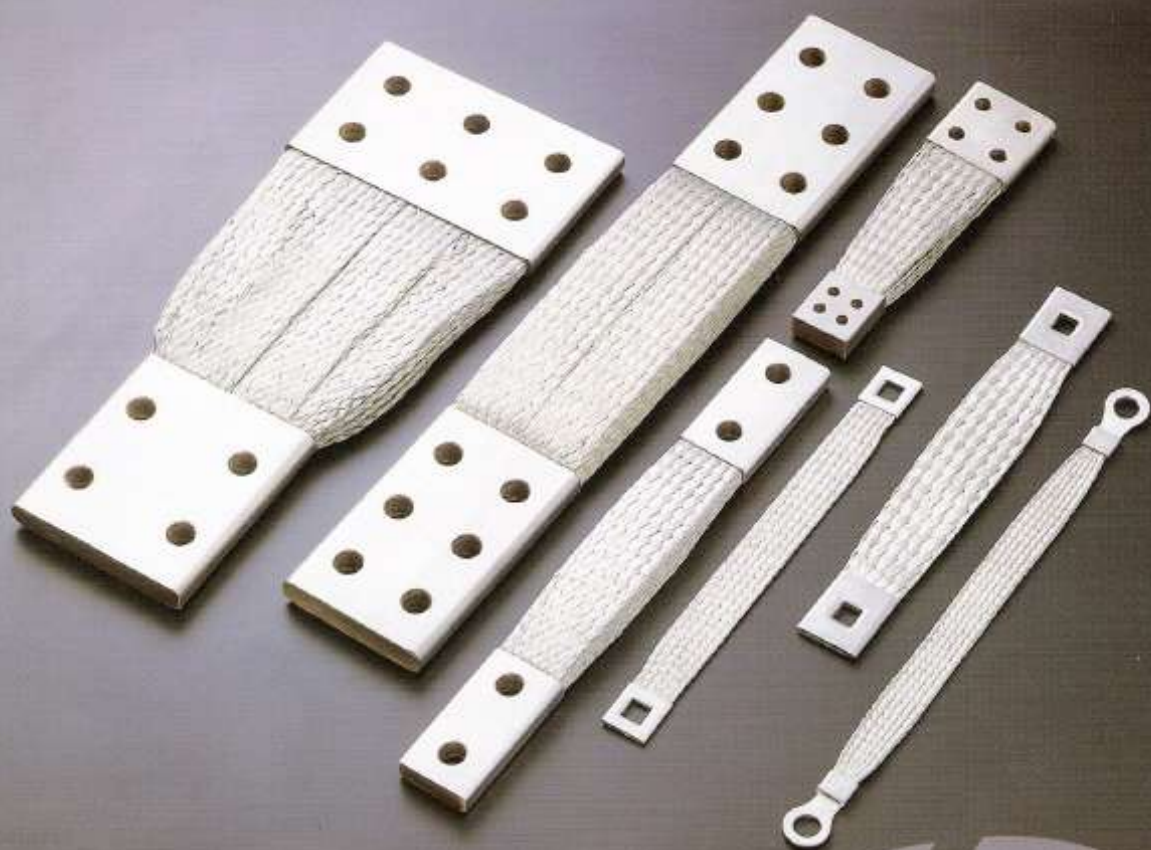
NORMINAL AREA mm <sup>2</sup>	COMPOSITION	W X T mm	CURRENT RATING amps	ROLL m
5.5	0.18/5/48	8×1	65	300
8	0.18/7/48	14×1	80	300
10	0.18/9/48	15×1.5	90	200
12.5	0.18/10/48	17×1.6	100	200
14	0.18/12/48	19×1.7	105	200
16	0.18/14/48	20×2.0	120	200
22	0.18/18/48	24×2.0	135	100
25	0.18/21/48	25×2.0	150	100
30	0.18/24/48	26×2.0	170	100
35	0.18/29/48	35×2.0	200	100
38	0.18/32/48	35×2.5	220	100
50	0.18/41/48	35×3.0	250	100
60	0.18/50/48	35×3.5	270	100
70	0.18/58/48	40×3.5	300	100
80	0.18/66/48	42×4.0	320	50
100	0.18/82/48	50×4.5	360	50

For earthing, or as continuous current carrying conductors upto 550A as standard @ 56°C rise above ambient temperature

## COPPER SLEEVES

NORMINAL AREA mm <sup>2</sup>	COMPOSITION	DIAMETER "E" EXPANDED mm	PITCH mm	ROLL m
16	0.25/7/48	180	300 – 350	100
25	0.30/7/48	210	300 – 350	100
35	0.30/10/48	215	420 – 450	100
50	0.30/15/48	220	420 – 450	100
70	0.30/21/48	230	420 – 450	100
95	0.30/28/48	250	420 – 450	50

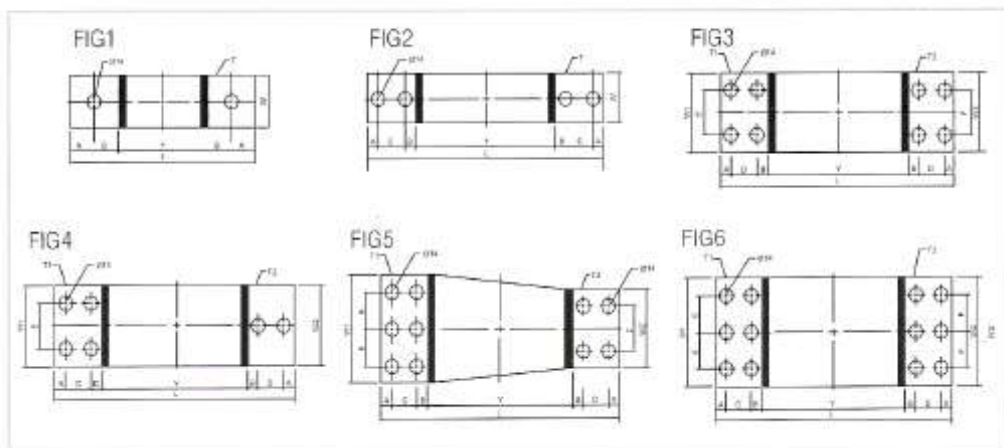
# FLEXIBLE CONDUCTORS



# FLEXIBLE CONDUCTORS

AMPERE RATING	THICKNESS X WIDTH (mm)	FIG	DIMENSION														
			L	W	W1	W2	T	T1	T2	Y	A	B	C	D	E	F	
600	11×40	2	290	40			11				120	20	25	40			
600	9×50	2	290	50			9				120	20	25	40			
600	8×50	2	290	60			8				120	20	25	40			
800	13×50	1	230	50			13				120	25	30				
800	10×75	3	320		75	75		10	10	150	20	25	40	40	40	40	
1000	11×75	3	320		75	75		11	11	150	20	25	40	40	40	40	
1000	11×80	3	320		80	80		11	11	150	20	25	40	40	40	40	
1000	10×100	3	320		100	100		10	10	150	20	25	40	40	40	40	
1200	14×75	3	320		75	75		14	14	150	20	25	40	40	40	40	
1200	13×80	3	320		80	80		13	13	150	20	25	40	40	40	40	
1200	11×100	3	320		100	80		11	13	150	20	25	40	40	40	40	
1500	14×100	3	320		100	100		14	14	150	20	25	40	40	40	40	
1500	13×120	4	410		120	120		13	13	200	25	30	50	50	40	40	
1500	13×125	4	410		125	125		13	13	200	25	30	50	50	40	40	
1500	12×150	4	410		150	150		12	12	200	25	30	50	50	50	50	
2000	16×120	4	410		120	120		16	16	200	25	30	50	50	40	40	
2000	15×125	4	410		125	125		15	15	200	25	30	50	50	40	40	
2000	14×150	4	410		150	150		14	14	200	25	30	50	50	50	50	
2000	16×120	5	420		120	100		16	20	200	30	35	50	40	40	40	
	21×100																
2500	19×120	4	410		120	120		19	19	200	20	25	50	50	40	40	
2500	18×125	4	410		125	125		18	18	200	20	25	50	50	40	40	
2500	17×150	4	410		150	150		17	17	200	20	25	50	50	50	50	
2500	17×150	6	440		150	120		17	19	200	30	35	50	60	40	60	
	19×120																

Flexible conductors can be manufactured as per customer's own specification.

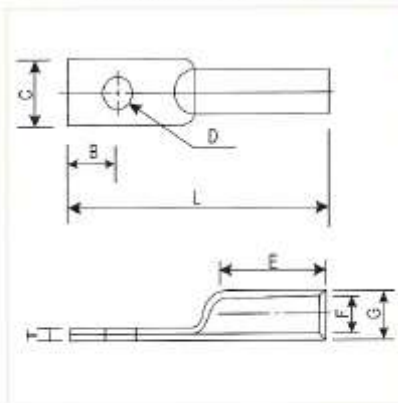


# COPPER LUGS & CONNECTORS



## TERMINAL LUG(1HOLE)

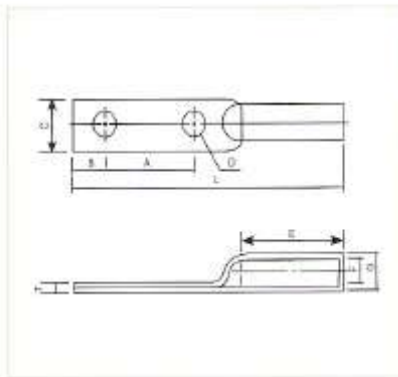
unit:mm



SIZE	Dimensions(mm)							
	B	C	D	E	F	G	L	T
22mm	10	13	9	23	6.2	8.6	45	2.4
38mm	12	15	11	25	8.4	11.0	55	2.6
60mm	16	20	11	35	11.0	14.2	70	3.2
100mm	16	25	14	37	13.5	17.7	80	4.2
150mm	16	30	14	45	16.5	22.0	95	5.5
200mm	16	36	14	50	19.0	25.0	105	6.0
250mm	16	40	14	53	21.0	27.6	110	6.6
325mm	16	45	14	57	24.0	31.6	125	7.6
400mm	16	51	14	60	27.0	35.2	135	8.2
500mm	16	55	14	65	29.0	38.6	140	9.6

## TERMINAL LUG(2HOLE)

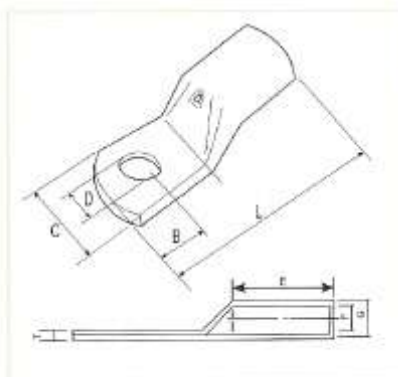
unit:mm



SIZE	Dimensions(mm)								
	A	B	C	D	E	F	G	L	T
38mm	45	12	15	11	42	8.4	11.0	120	2.6
60mm	45	16	20	11	47	11.0	14.2	130	3.2
100mm	45	16	25	14	51	13.5	17.7	135	4.2
150mm	45	16	30	14	62	16.5	22.0	146	5.5
200mm	45	16	36	14	62	19.0	25.0	150	6.0
250mm	45	16	40	14	65	21.0	27.6	155	6.6
325mm	45	16	45	14	70	24.0	31.6	170	7.6
400mm	45	16	51	14	70	27.0	35.2	170	8.2
500mm	45	16	55	14	75	29.0	38.6	180	9.6

## TERMINAL LUG

unit:mm



SIZE	Dimensions(mm)							
	B	C	D	E	F	G	L	T
10mm	9	15	8.5	12	5	8	36	1.9
16mm	9	15	8.5	17	6	9	42	2.4
25mm	9	16	8.5	18	7	10.5	53	3
35mm	9	17	8.5	19	8.5	12	54	3.5
50mm	12	19	8.5	20	10	14	50	3.8
70mm	12	22	10.5	21	12	16	56	4
95mm	12	26	10.5	23	13.5	18	58	4.5
120mm	15	29	12.5	28	15	20	70	5
150mm	16	32	12.5	30	16.5	22	74	5
185mm	17	35	12.5	32	18.5	24	84	5
240mm	17	38	12.5	37	21	26.4	87	5.5
300mm	21	43	14	44	24	30	105	6.5
400mm	24	49	14	46	27	34	118	7
500mm	29	56	14	60	30	40	143	10



**ANNEALED COPPER STRANDED WIRE**

The image displays various copper wire products. At the top left is a large coil of thick, yellowish-brown annealed copper stranded wire. To its right is a smaller coil of thinner, silver-colored copper wire. Below these are several loose lengths of the same wires, some showing the individual strands. At the bottom, there are two rolls of copper wire mesh, one standing upright and one lying flat, with a third roll partially unrolled in front of them. The background is a dark, reflective surface.

**COPPER WIRE MESH**



## ANNEALED COPPER STRANDED WIRES

NOMINAL AREA (mm <sup>2</sup> )	COMPOSITION			CURRENT RATINGS(A)
	0.05mm	0.08mm	0.18mm	
0.1	3/17/0.05	3/7/0.08		1
0.3	3/51/0.05	3/20/0.08		5
0.5	3/85/0.05	3/33/0.08		8
0.75	7/55/0.05	3/50/0.08		10
1.25	7/91/0.05	7/36/0.08	7/7/0.18	15
2	7/146/0/05	7/57/0.08	7/12/0.18	20
3.5	7/255/0/05	7/100/0/08	7/20/0.18	30
5.5	7/406/0.05	7/157/0/08	7/31/0.18	45
8		7/228/0.08	7/45/0.18	55
10		7/284/0.08	7/57/0.18	60
14		7/399/0.08	7/79/0.18	65
16		7/454/0.08	7/90/0.18	70
22			7/124/0.18	75
25			7/140/0.18	80
30			7/168/0.18	90
35			7/197/0.18	105
38			7/214/0.18	115
50			19/104/0.18	150
60			19/125/0.18	185
70			19/145/0.18	210
80			19/166/0.18	245
100			19/207/0.18	300

## TINNED COPPER WIER MESH

1. Application : Cable Joints and End Seals
2. Material : Tinned Copper Wires with a resistance of 0.018Ω/m
3. Width : 50mm and 100mm
4. Length : 100 meter per roll